

SLIDE-LOK®

Garage & Storage Cabinets

**READ ALL INSTRUCTIONS BEFORE YOU BEGIN.
DO NOT JUMP AHEAD OF ANY STEP.**

If this is your first time assembling a SLIDE-LOK cabinet, you may find it helpful to first assemble the cabinet without gluing to give yourself the opportunity to become familiar with the assembly process of SLIDE-LOK storage cabinets. All components will slide together without force or effort if the dovetails are lined up properly. Do not force. If force or exertion is necessary, pieces are not aligned correctly. Take apart and start over. Be sure to glue all joints at time of assembly. Allow glue to completely dry before installing.

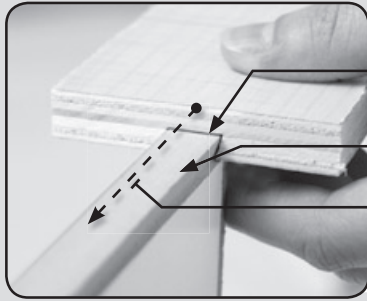


S3634

Assembly Instructions

slide-lok.com/assembly/S3634

The Patented Dovetail Assembly System



Female Dovetail
Glue this edge

Male Dovetail

Slide Together
Slide Female dovetail into Male dovetail

Quick And Easy Assembly

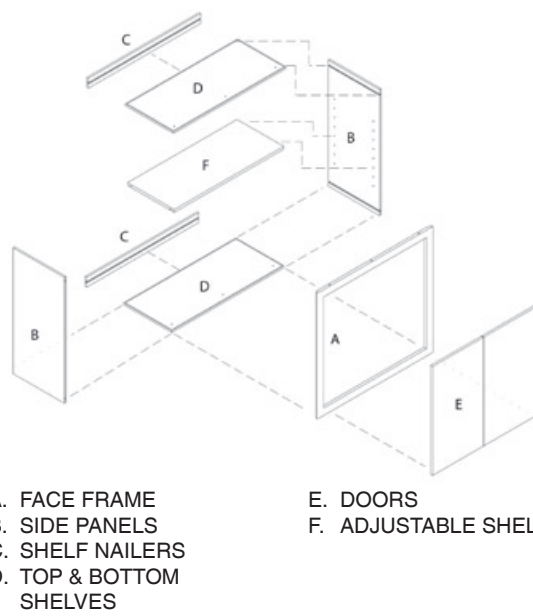
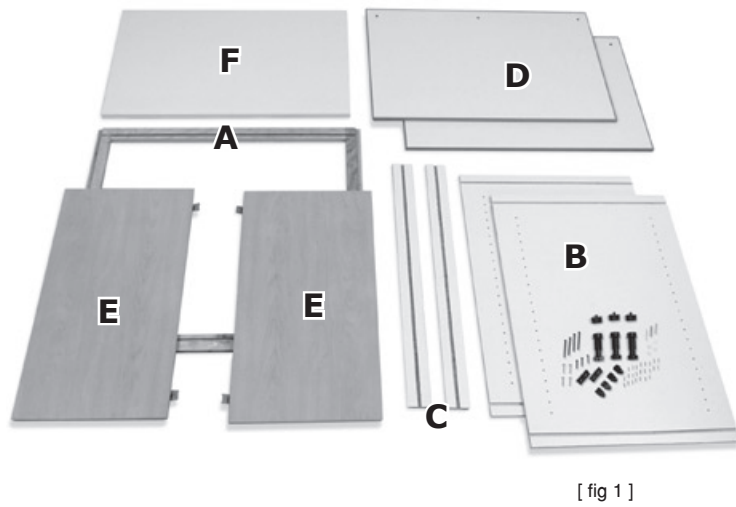
All components will slide together without force or effort if the dovetails are lined up properly. If force or exertion is necessary, pieces are not aligned correctly.



**Simply Slide A Into B
It's That Easy!**

Step 1. - Identify all Pieces

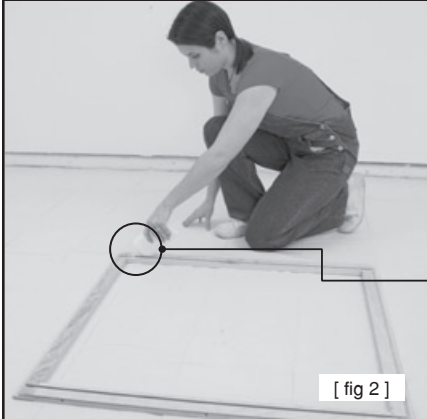
Remove cabinet parts from box and identify all pieces as pictured in fig. 1.



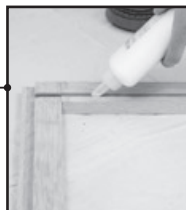
- (3) Adjustable legs & doweled tops
- (3) Dowels
- (4) Clear bumpers
- (2) Corner brackets
- (4) Shelf clips
- (4) 1 1/2" Door screws
- (4) 2 1/2" Black installation screws
- (24) 1/2" Silver screws for adj. Legs, corner brackets & shelf clips
- (3) 1 1/4" Black screws for joining cabinets together



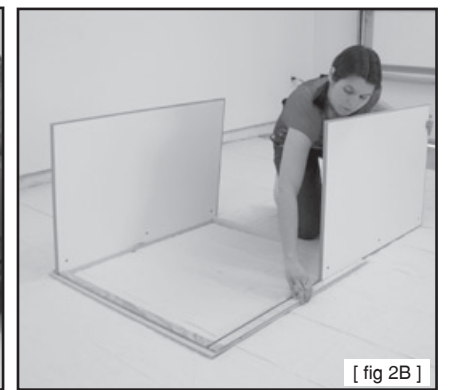
Step 2. - Attaching Top and Bottom Shelves



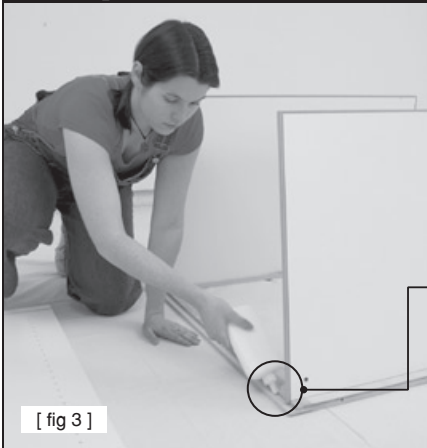
Place face frame "A" face down on a smooth surface to prevent scratching (you may use the box it came in). Glue all female dovetail joints as shown in fig. 2. Slide shelves "D" into position while aligning as in fig. 2A & 2B with holes closest to the face frame.



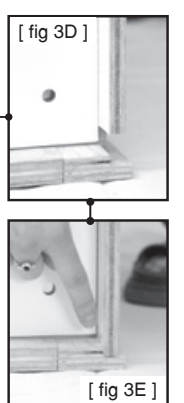
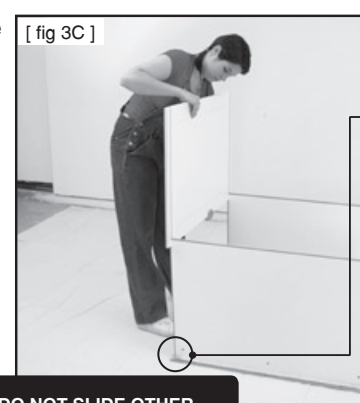
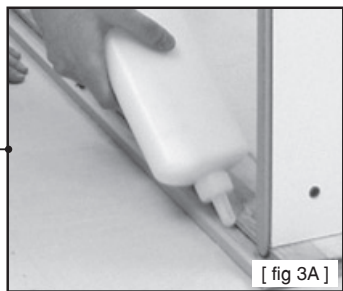
NOTE:
A general purpose carpenters wood glue is recommended for assembly. Apply a 1/16" bead of glue to the entire length of the female Dovetail joint



Step 3. - Attaching the First Side Panel

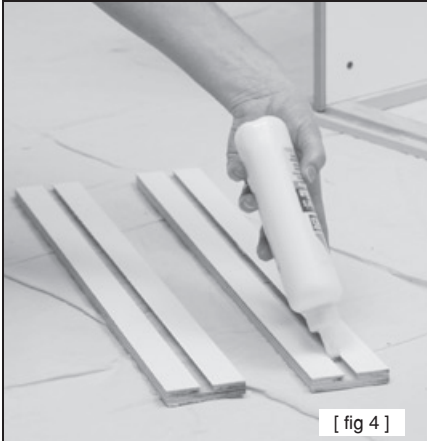


Glue rabbet joint as in fig. 3A. Dovetail joint and side panel as in fig. 3B. Slide one side panel "B" into place while aligning dovetails on top and bottom of both shelves (see fig. 3C). Make sure to start all dovetails simultaneously, then slide side panel into rabbet joint as in fig. 3D & 3E.



DO NOT SLIDE OTHER SIDE PANEL ON AT THIS TIME.

Step 4. - Attaching Top and Bottom Nailers



Glue the female dovetail on the nailer see fig. 4. Slide one nailer onto the top shelf (fig. 4A) and one nailer onto the bottom shelf (fig. 4B). Make sure they touch the side panel.



Remember to follow the steps exactly as shown. Do not jump ahead, or you'll get tangled up!

Step 5. - Attach Second Side Panel and Installing Corner Blocks



[fig 5]

Repeat STEP 3 for the other side panel see fig. 5 and 5A. Take the corner blocks and 1/2" screws and attach to face frame and side panels (see fig. 5B and 5C) in the middle of the cabinet. (see fig. 5D)



[fig 5A]

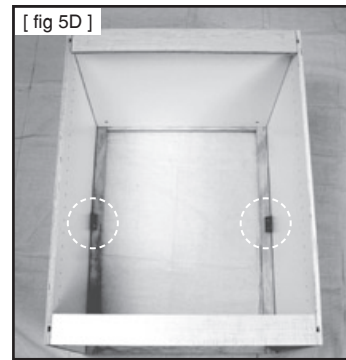


[fig 5B]



[fig 5C]

Attach corner blocks to both side of the cabinet, see figure 5D



[fig 5D]

Step 6. Attaching Cabinet Legs



[fig 6]

If You Plan To Stack This Cabinet, Do Not Put The Legs On.

Assemble adjustable leg by attaching the dowel head to the leg (fig. 6, 6A, and 6B). Take the assembled leg and insert dowel into the hole provided as in fig. 6A. Use 1/2" screws and screw leg into bottom of cabinet to keep it firmly in place (fig. 6C and 6D). Let glue dry completely.

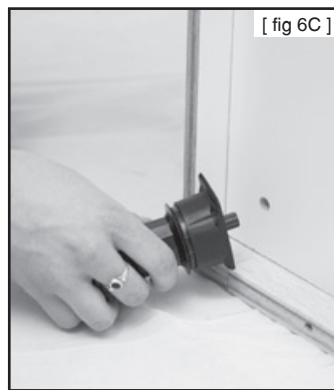


[fig 6A]

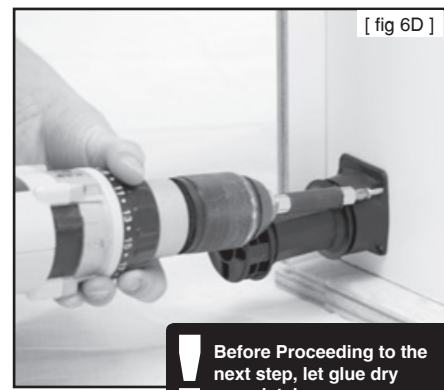


[fig 6B]

IF YOU PLAN ON USING THIS CABINET AS A STACKABLE
Do not attach the legs to this cabinet and skip to Step 7.



[fig 6C]



[fig 6D]

Before Proceeding to the next step, let glue dry completely.

Step 7. - Fastening Cabinet to Wall and Stacking Cabinets



[fig 7]

After glue is dry locate studs in wall (fig. 7A). Attach cabinet to wall using 2 1/2" screws (fig. 7). **STACKING CABINETS:** If you are stacking the cabinet place cabinet on top of already installed cabinet, carefully overhang cabinet to revealing dowel holes. Push dowels into all of the pre-drilled holes (fig. 7B and 7C). Next align dowels with cabinets below (fig 7D). Set cabinet down in place and attach to wall (fig, 7).



[fig 7A]

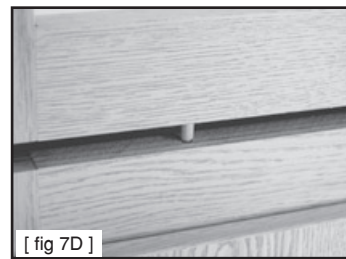
NOTE:
It is important that the cabinet is set flush to the wall and fastened to wall studs for stability and strength.



[fig 7B]



[fig 7C]



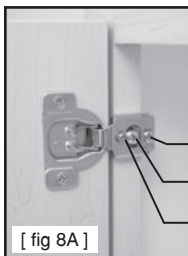
[fig 7D]

Step 8. - Hang Cabinet Doors



[fig 8]

To hang doors, use the 1 1/2" silver screws. Hold door up so the door hinge hole lines up with the pre-drilled hole in the face frame. Screw in the hinge so the doors are level across the top and flush in the front. Take clear bumpers and attach as in fig. 8B, to top and bottom of doors.



[fig 8A]

NOTE:
Hinge is 6 way adjustable (up, down, in out, back and forth) fig. 8A.

- In and out
- Up and Down
- Back and Forth



[fig 8B]

DO NOT TO OVERTIGHTEN!
It is recommended that you finish tightening with a screwdriver to avoid stripping the pre-drilled holes.

Step 10. - Congratulations!



CONGRATULATIONS!
You have just finished assembling and installing a SLIDE-LOK cabinet.

SLIDE-LOK
Garage & Storage Cabinets

Design Your Own SLIDE-LOK Storage Solution

Visit Jack's Design Center, an interactive SLIDE-LOK Storage System design tool, which will enable you to design your own SLIDE-LOK Storage system online

www.slide-lok.com
800-835-1759



Step 9. - Install Adjustable Shelf

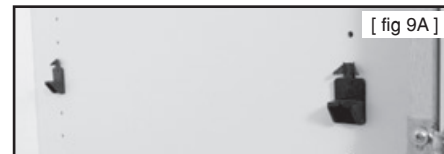


[fig 9]

To install shelf, use all 4 shelf clips. Push shelf clip into holes, as in fig. 9, on side panel. Make sure the clips are level in front, back and on the other side panel, see fig. 9A

Angle shelf and slide into cabinet, setting one side of shelf on top of shelf clip, see fig. 9B. Let shelf drop onto the other side and snap into place, see fig. 9C. To secure screw into underside of shelf as in Fig. 9D.

NOTE: To secure shelf clips to side, use 1/2" silver screws and screw shelf clips into side panel.



[fig 9A]



[fig 9B]



[fig 9C]

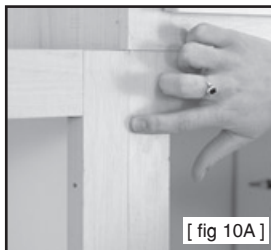


[fig 9D]

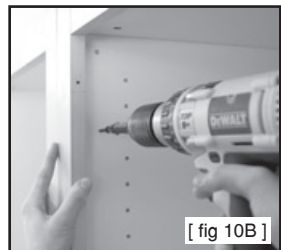
NOTE: - Attaching Two or More Cabinets

When putting two cabinets together, hold both face frames flush, see fig. 10A.

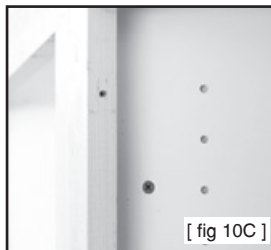
Take a 1 1/4" screw and insert it behind the face Frame, into the side panel of one cabinet through the other cabinet's side panel, screwing it tightly together see figures 10B & 10C. Do this at the top, middle and bottom of the cabinet.



[fig 10A]



[fig 10B]



[fig 10C]